



14K Surface-Mount  
4814605AF

**Raising The Bar For Alignment Productivity**



**Scissor**  
Alignment Lifts



# Scissor Alignment Lifts

## Efficient, Safe, Reliable

Alignment technicians prefer scissor lifts over 4-post lifts because they are easier to operate, provide increased accessibility to alignment adjustment areas, and are easier to load. Scissor lifts also use less floor space. Five scissor lifts fit into the same operating space as four 4-post lifts!

### **All John Bean 10K and 14K Scissor Alignment Lifts Have:**

- Triple safety systems with air-actuated mechanical lock release
- Twin interlocking mechanical safeties with 18 level and locked positions
- Large, 72" flush-mount, full-floating rear slip plates that are virtually maintenance free
- Open access front-to-rear between runways
- Two work steps with 8 positions, allowing easy access for under-hood services
- A low-profile design with 50" approach ramps
- Integrated air kit for connecting Roller Jacks & air tools
- Meet current ANSI/ALI ALCTV-2006 standards
- Certified Flush-mount models available



14K Surface-Mount  
4814605AF

## Flush-Mount Lifts

Get maximum productivity out of your available bay space with John Bean Scissor Alignment Lifts. Our Scissor Lifts move straight up and down for better front-to-rear space utilization. (Optional drive-through capability also available)



14K Flush-Mount  
4814605AFM

10K Flush-Mount  
4810605AFM

# The Right Lifts For The Right Jobs



10K Surface-Mount  
4810605AF



14K Surface-Mount  
4814605AF

## 10K Scissor

- 10,000 lb. lifting capacity
- Proportionally-controlled, hydraulically-synchronized lifting systems with 2 powerful heavy-duty lifting cylinders to maintain level from floor to 73" of lifting height
- Low-profile stance of 9" allows for a gentle drive-on approach for low-profile vehicles
- Compact, enclosed console protects core components from the shop environment
- Full-length base frame accommodates fast installation and increases structural integrity

## 14K Scissor

- 14,000 lb. lifting capacity
- Advanced lifting system has 4 powerful cylinders that maintain a level position at any point from the floor up to 73" of lifting height
- Low-profile stance of 10" allows for a gentle drive-on approach for low-profile vehicles
- Compact, enclosed console protects core components from the shop environment
- Full-length base frame accommodates fast installation and increases structural integrity

## Optional Accessories

### Roller Jacks

John Bean's complete line of air/hydraulic Roller Jacks are versatile, durable and optimize the profitability of any lift. A low-profile design eliminates the need to swing away when the lift is lowered. A high lifting height enables more access for under-car repairs. Interchangeable adapters make lifting fast for brake work and tire service on passenger cars, light trucks & vans. Easy to maintain & built to last!

- EELR503A (Low-profile 5,000 lb. lifting capacity, for 10K Scissor Lifts)
- JBC217 (7,000 lb. lifting capacity, for 14K Scissor Lifts)



### Premium Turntables

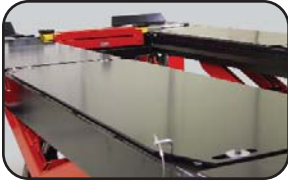
John Bean's premium turntables prevent runway scratching and allow for a full range of motion when making alignment adjustments.

- EAK0289J06A (Dimensions (LxWxH): 18.5" x 19.7" x 2")



For more optional accessories, contact a Local Sales Representative or visit [www.snaponequipment.com](http://www.snaponequipment.com)

# Features



## Slip Plates

Durable 72" slip plates glide on over-sized bearings, providing the range of motion needed to apply rear alignment corrections. Slip plates are maintenance-free due to strategically-positioned openings in the runway, which quickly disperse water and dirt - allowing for reliable performance every time!

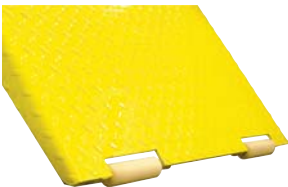


## Work Steps

Work steps on each side of the lift can be adjusted to 8 different positions, granting easy access to underhood and steering wheel adjustments.



Hidden, yet easy-to-reach, work step storage under the front of each runway.



## Synthetic Rollers

Replaceable synthetic rollers on ramps prevent damage to floors & are quieter than conventional metal rollers.



## Operator Console

Completely enclosed, protecting electronics and hydraulics.

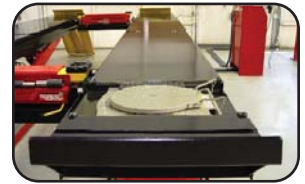
## Integrated Air Kit

Connect Roller Jacks and air tools for increased productivity! A port can be added for customer-supplied quick-connect allowing for an easy air tool connection point.



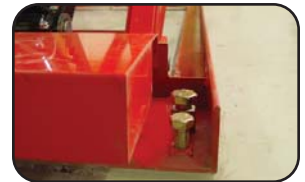
## Widest Runways

Long and wide runways allow for alignment service on a wide range of vehicle widths and wheelbases.



## Base Frame

Full-length base frame allows for fast installation and increases structural integrity.



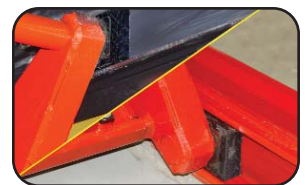
## Triple Safety System

Includes large twin-interlocking air-actuated mechanical safety locks featuring 18 level and locked positions, velocity fuses, & pressure-sensing flow control valves.



## Smooth Lifting

Ultra-High Molecular Weight slide blocks allow for smooth and uniform lifting.







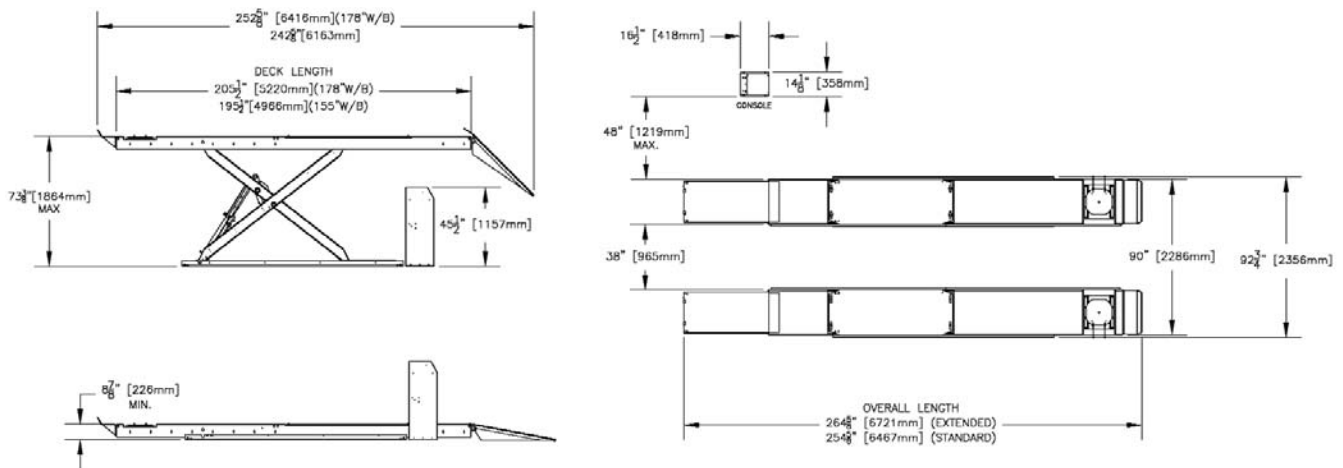
# Scissor Alignment Lifts

## SPECIFICATIONS

	4810605AF 4810605AFM*	4810605AFX 4810605AFMX*	4814605AF 4814605AFM*
Maximum Capacity	10,000 lbs.	10,000 lbs.	14,000 lbs.
Overall Width	92.5"	92.5"	92.5"
Width Between Runways	38"	38"	38"
Overall Length (Surface-Mount)	254.625"	264.625"	269.625"
Overall Length (Flush-Mount)	218.625"	228.625"	228.625"
4-Wheel Alignment Wheelbase	155"	155"	155"
2-Wheel Alignment Wheelbase	165"	175"	182"
Service Wheelbase	179"	189"	196"
Runway Surface Length	195.5"	205.5"	210"
Runway Surface Width	26"	26"	26"
Maximum Raised Height	73"	73"	73"
Minimum Lowered Height	9"	9"	10"
Operator Console Dimensions (DxWxH)	16.5" x 14.125" x 45.75"	16.5" x 14.125" x 45.75"	16.5" x 14.125" x 45.75"
Lifting Time (Fully loaded)	75 seconds	75 seconds	75 seconds
Air Supply Requirements	90 - 120 PSI	90 - 120 PSI	90 - 120 PSI
Power Requirements (Standard)	230V, 1Ph, 60Hz	230V, 1Ph, 60Hz	230V, 1Ph, 60Hz
Shipping Weight (Surface-Mount/Flush-Mont)	4,525/4,375 lbs.	4,725/4,575 lbs.	4,875/4,725 lbs.

\*Flush Mount Models

## 10K SCISSOR LINE DRAWINGS



Models 4810605AF & 4810605AFX

This diagram is for promotion illustration purposes only, and should not be used as installation instructions. Contact your local Equipment Sales Specialist if further information is needed.

Snap-on Equipment / 309 Exchange Avenue / Conway, Arkansas 72032 U.S.A.  
 Fax: 501-450-2085 / Toll Free: 1-800-362-4618 / International: 501-450-1568  
[www.SnaponEquipment.com](http://www.SnaponEquipment.com)

John Bean Canada / 6500 Millcreek Drive / Mississauga, Ontario L5N 2W6  
 Customer Service: 1-800-362-4608 / Fax: 905-826-7800  
[www.johnbean.ca](http://www.johnbean.ca)