

PREMIUM TIRE CHANGER

monty®

TIRE CHANGING SYSTEMS

8800

SMARTSPEED™

ALL IN ONE  
TIRE CHANGER



HOFMANN® 

# HIGH PRODUCTIVITY EASY TO USE LESS TECHNICIAN FATIGUE

monty® 8800 combines high productivity features with high performance



## QUICKLOK™

- Fast and effortless automatic wheel clamping
- Center post design - more flexibility in wheel clamping
  - No wheel damage
  - No jaw protection required
  - No need to “push” the rim into the jaws
  - No restriction on rim size
- Constant locking force
- Electromechanical lock and unlock through the switch on the panel



## LOWER BEAD CAMERA

Camera and monitor assist in controlling operation on the lower bead



## ON-FLOOR BREAKER

Best tool to break the tire bead mounted on steel rims

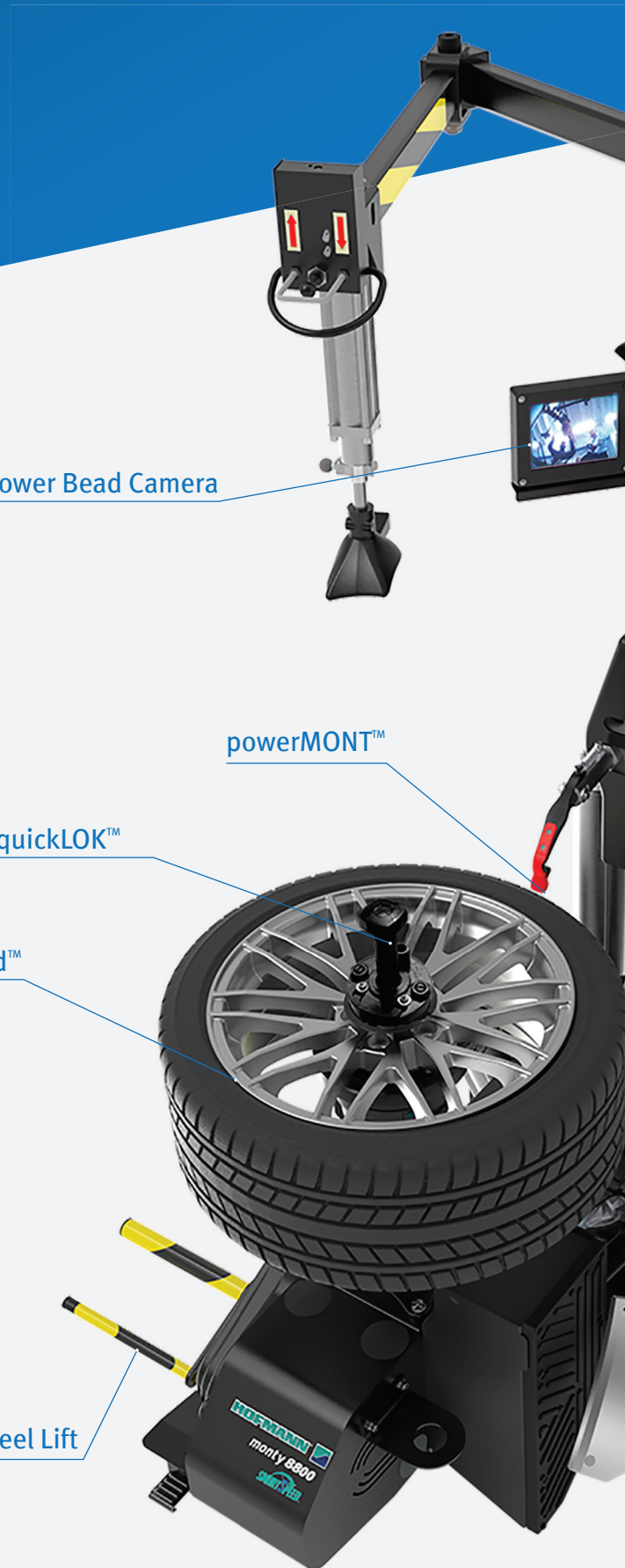
Lower Bead Camera

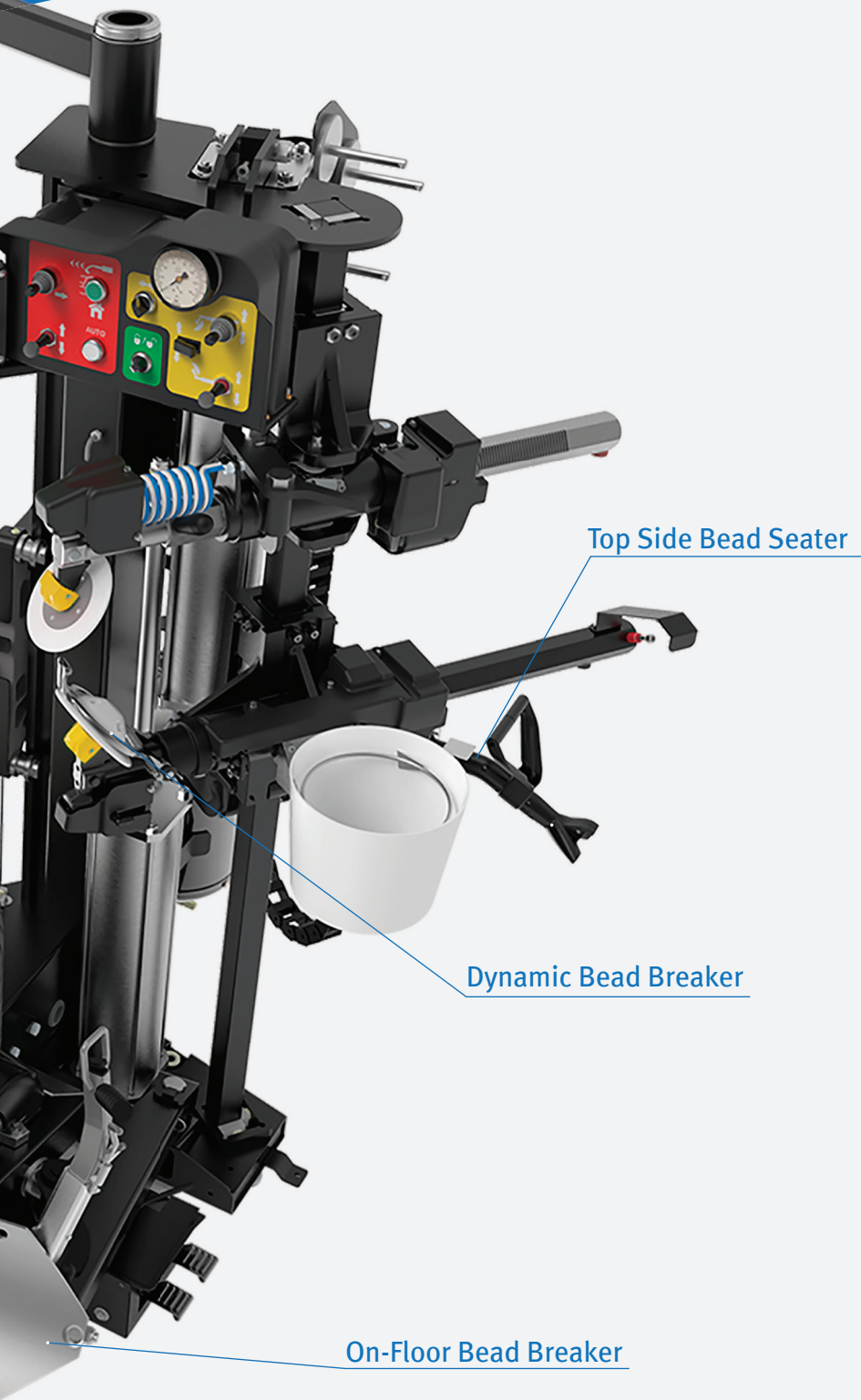
powerMONT™

quickLOK™

smartSpeed™

Integrated Wheel Lift





Top Side Bead Seater

Dynamic Bead Breaker

On-Floor Bead Breaker



## DYNAMIC BEAD BREAKER

Ergonomic and easy-to-adjust system provides the best and easiest bead breaking procedure for UHP and Run Flat tires



## POWERMONT™

The fast, innovative leverless mount/demount system that makes working with any type of tire easier

### FAST

- Synchronizes the mount/demount tools with dynamic bead breaker position for enhanced speed
- Fast disengage and repositioning of the mount/demount tool

### EASY TO USE

- Intuitive and simple control of the operation

### SAFE

- Optimal mount/demount tool design protects the bead from stress during operation
- Plastic protection avoids rim damage at all times

### RELIABLE

- Improved steel quality, unique design and plastic protection guarantee steady mount/demount operation



## SMARTSPEED™

Continuously controls the mount/demount conditions in order to provide the optimum torque/speed combination to the motor



# 8800

# monty®

TIRE CHANGING SYSTEMS



## TECHNICAL SPECIFICATIONS

Max. Tire Width	15" (380mm)
Max. Rim Width	13" (330mm)
Max. Wheel Diameter	47" (1200mm)
Reverse Wheels (Clearance/Flange Tool)	12" (305mm)
Wheel Lift Capacity	154 lbs. (70 kg)
Standard Power Supply	230V 1ph 50-60hz 16A
Air Pressure Required	116 - 174 psi (8-12 bar)
Footprint (W x D x H)	58" x 73" x 74" (1481 x 1863 x 1880mm)
Shipping Weight	1190 lbs. (540 kg)

## STANDARD ACCESSORIES



**EAA0304G16A**  
Lube Brush



**EAA0408G33A**  
Plastic Tire Protector



**EAA0358G85A**  
Bead Clamp



**EAA0377G23A**  
Smart Bead Spacer



**8-03229A**  
7.5 lbs Lube Bucket



**EAK0317G32A**  
Cone Kit 42-85mm  
(1) Steel Cone  
(3) Plastic Protectors



**EAA0378G36A**  
Bead Breaker Tool



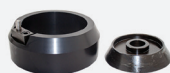
**EAA0304G15A**  
Bead Breaker Blade Protector



**EAA0364G00A**  
Reverse Mount Wheel Kit  
(5) 24mm cylindrical tip pins  
(5) 24mm conical tip pins



**EAA0440G50A**  
Set of 19mm Diameter Pins



**EAA0349G06A**  
Light Truck Wheel Kit



**EAM0058G12A**  
Reduction Cone (Ø64mm)



**EAM0058G07A**  
Reduction Cone (Ø78mm)



**EAC0099G40A**  
Reduction Cone (Ø120mm)



**EAC0102G25A**  
Reduction Cone (Ø145mm)



**EAA0440G51A**  
Spacer for Bead Breaker (20mm)



**EAA0440G52A**  
Spacer for Bead Breaker (50mm)



**EAA0440G53A**  
Spacer for Bead Breaker (70mm)



**EAK0330G58A**  
powerMONT™  
(10) Lower Tool Protector



**EAK0341G32A**  
powerMONT™  
(10) Upper Tool Protector

## OPTIONAL ACCESSORY



**EAA0481G79A**  
Tool Storage

For more information regarding the monty® 8800, call 800.251.4500 (US) or 800.267.2185 (Canada) or visit [www.hofmann-equipment.com](http://www.hofmann-equipment.com)

Hofmann is committed to product innovation and improvement. Therefore, specifications listed in this sell sheet may change without notice. ©2021 Snap-on Incorporated. Hofmann is a trademark, registered in the United States and other countries, of Snap-on Incorporated. All rights reserved. All other marks are trademarks of their respective holders. 10/2021 SSWH19017D

